



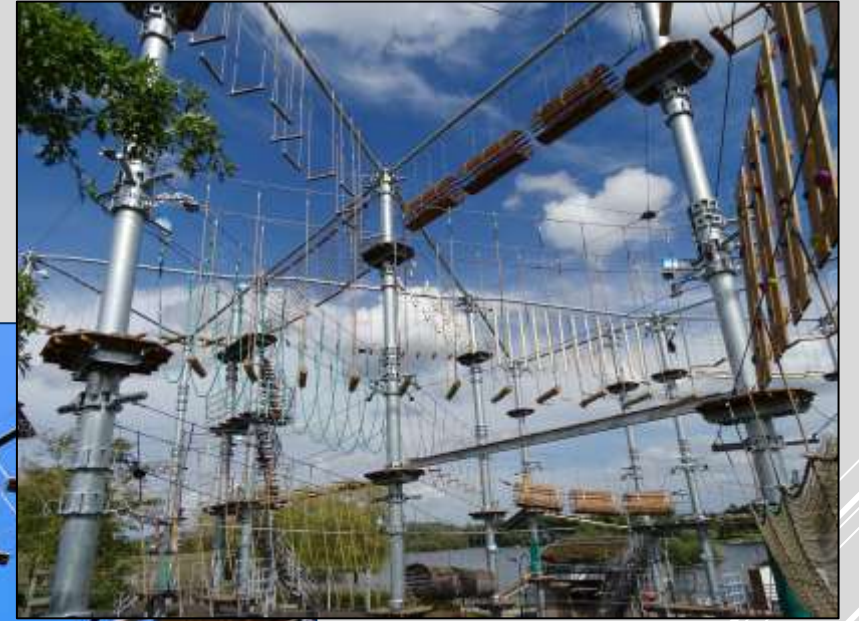
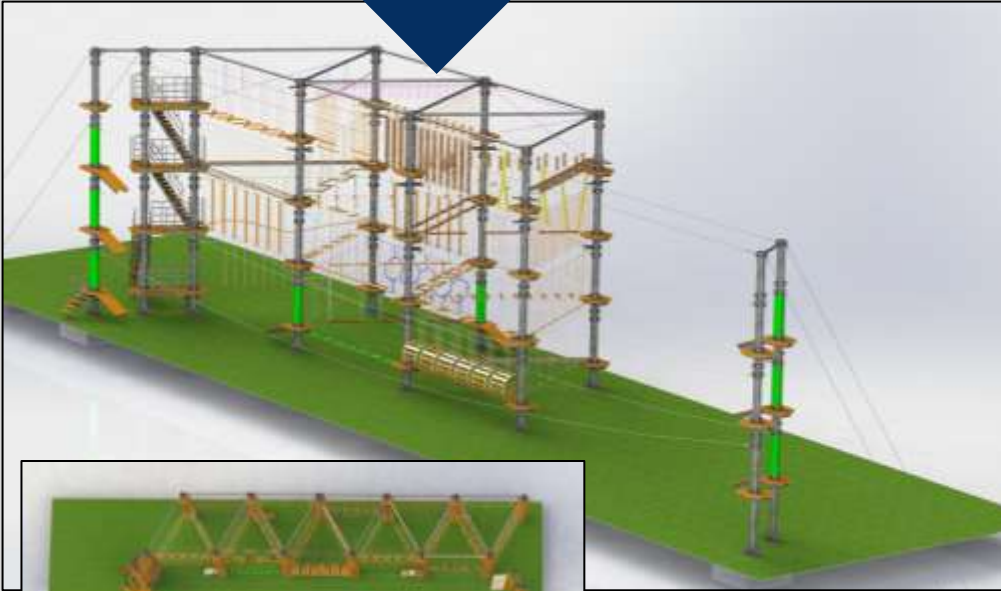
**INSPIRATION FOR CREATING A COMPLETE
LEISURE / ADVENTURE PARK
INDOOR / OUTDOOR / EVEN COVERED OUTDOORS
THEME AS REQUIRED
FOR THE INDIVIDUAL ADVENTURER AS FOR THE BIG CROWD**

SUSTAINABLE EQUIPMENT
FOR ADVENTURE PARK AND
AMUSEMENT PARK
FACILITIES



Inspiration

- **High Rope Park – Round posts - 3/4 levels - difficulty levels kids, green, blue, red and black**



Inspiration

- **High Rope Park – Square posts - 3/4 levels - difficulty levels kids, green, blue, red and black**



Inspiration

- **Indoor High ropes on posts**



When weather is too rainy, or outside the temperature is too high, or darkness has fallen outside, you still can have some adventure activity inside

The structure can be built in posts, with 2, 3 or 4 levels depending on the height of the building.

Combining high rope obstacles and zip wires, creates a lot of fun inside.

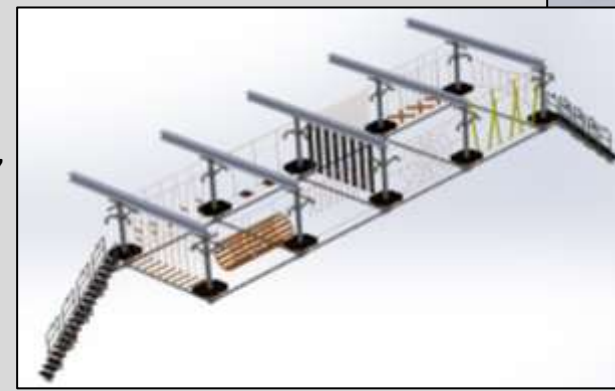
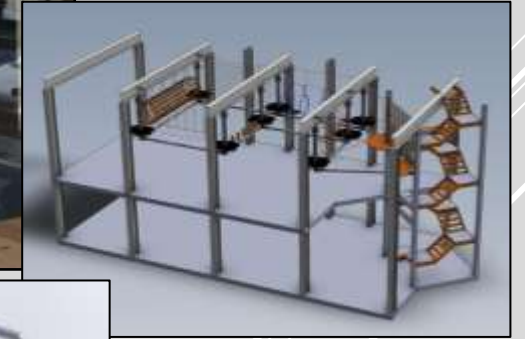
Presented by:



A&P
ADVENTURE & PARK EQUIPMENT
WORLDWIDE & LOCAL EQUIPMENT

Inspiration

- **Indoor suspending High ropes**



You have a gym, an indoor trampoline park, an indoor play area, an indoor event hall, etc. ... with lots of free height space at the ceiling!

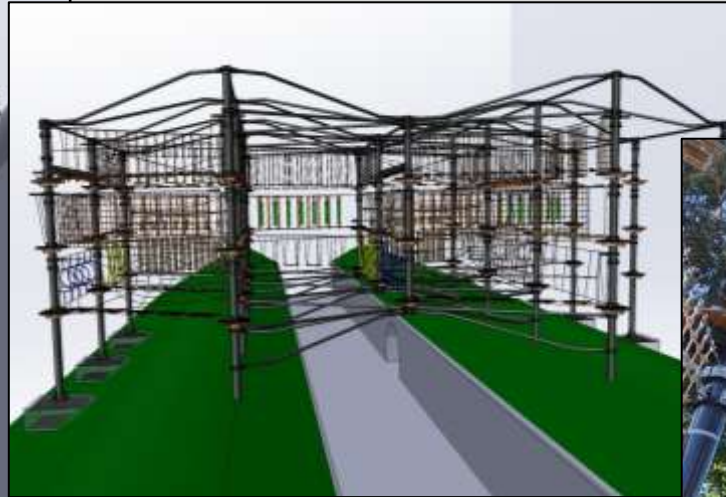
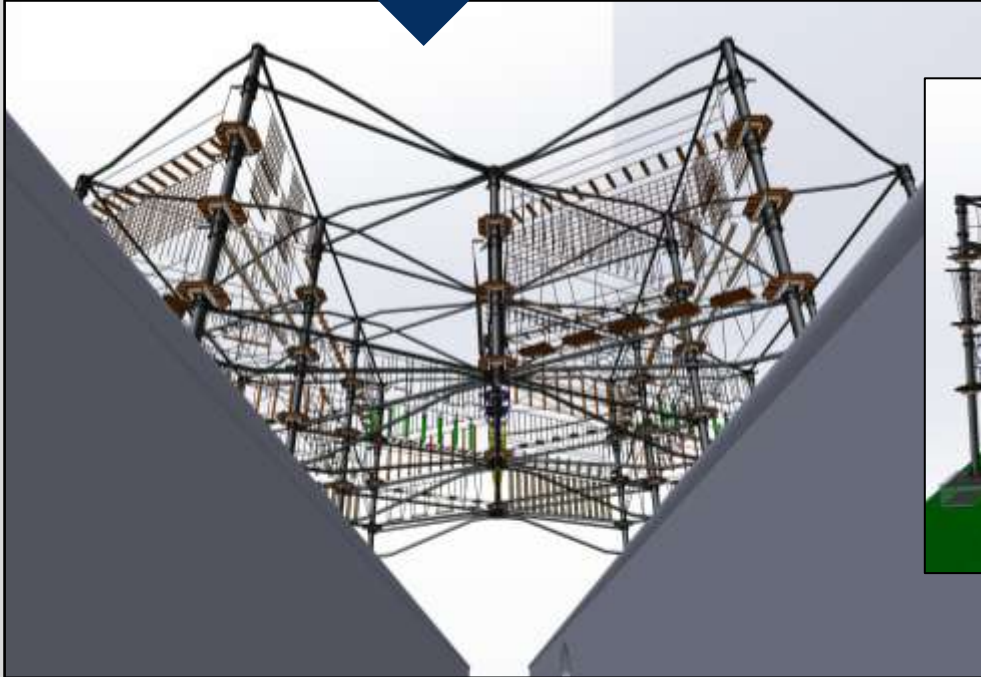
You can hang a suspended High rope course from that ceiling, depending on the free height, with 1 or 2 levels of adventure.

The space underneath can be used for other activities.



Inspiration

- **Suspending High Ropes hanging over small valleys, between buildings**



Presented by:

A&P
PROJECTS

A&P
ADVENTURE & PARK EQUIPMENT
WOODWORK & LYNE EQUIPMENT

Inspiration

- **Low height or normal height Indoor zip-paradise**

Cruising on a zip wire through a building



Light effects and dreamy music create a mystical atmosphere
Coming soon : VR experience



Inspiration

- **Multiple straight zip tracks**



Inspiration

- **Kidsziptrack on low level – pure fun**

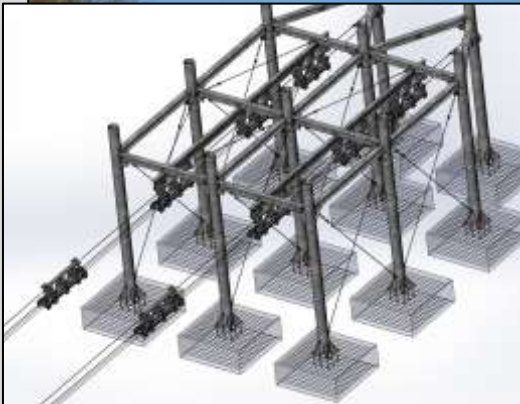


Inspiration

- **ZIP WITH TURNS**

A zip on a double cable for extra safety. It is not a rollercoaster, It is a zip with turns. A ride through your park with turns over a longer distance for an acceptable price. It's an extension for your adventure tower.

An endless ziptrack with turns, Riding down a complete mountain from top to valley.



Inspiration

- **Low Rope Teambuilding Park**



A Low rope park.
Team-training, Teambuilding.
Obstacles to overcome with
the help of your team, your
friends, your family.



Inspiration

- **High Rope Teambuilding Park**

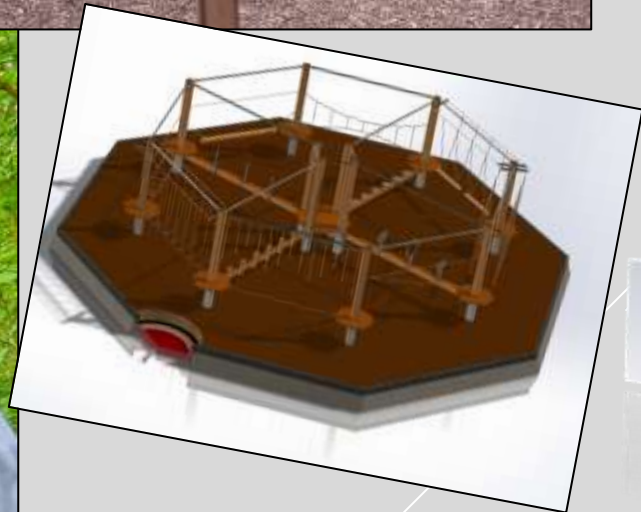
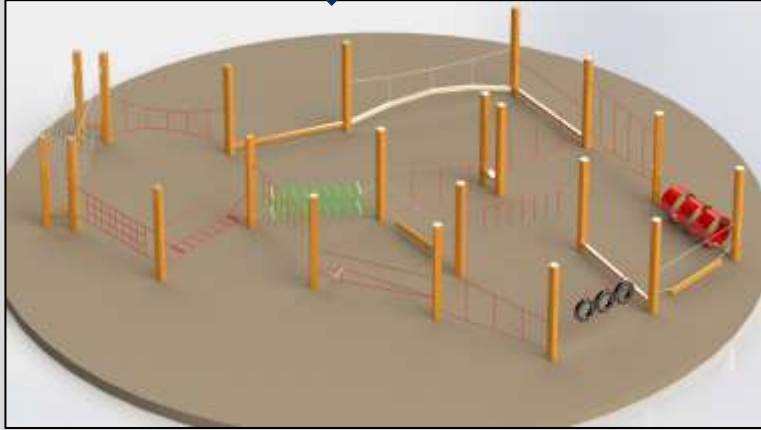


A High rope concept.
Team-training, Teambuilding.
Obstacles to overcome with
the help of your team, your
friends, your family.
The Nappy pole in the middle,
go and stand on it with 4
persons.



Inspiration

- **Low Kids Adventureropes**

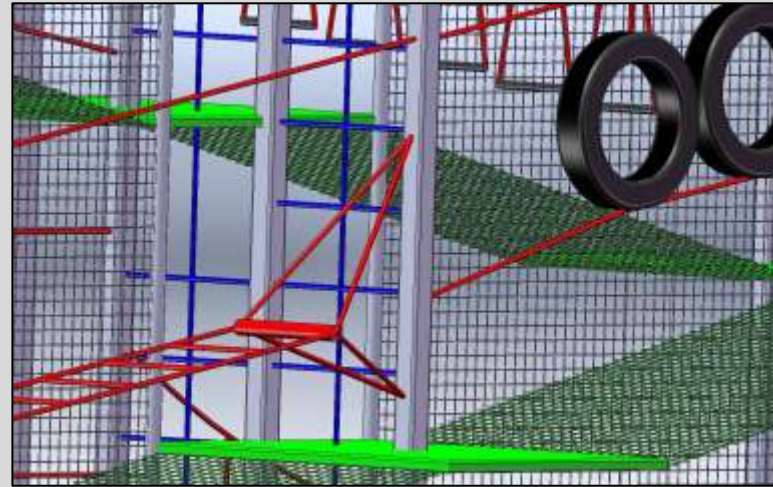
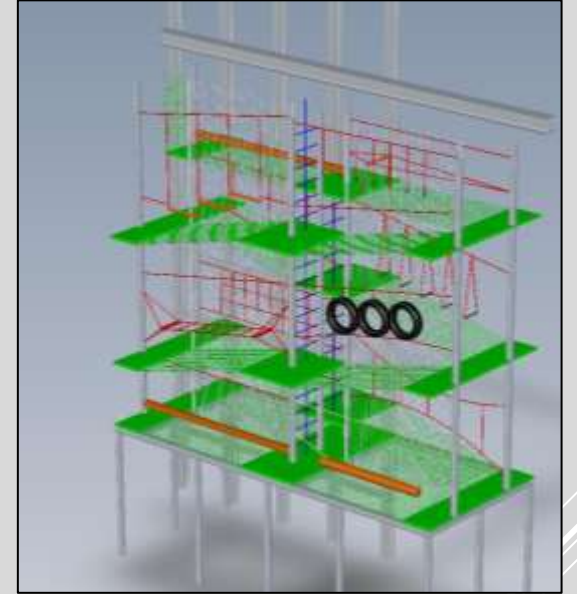


Presented by:
A&P
PROJECTS

A&P
ADVENTURE & PARK EQUIPMENT
WOODSLOPE & BUNKER EQUIPMENT

Inspiration

- **Kids indoor Adventure Park**



Inspiration

- **Obstacle runs / Police academy training runs / military obstacle courses**



Single or double tracks

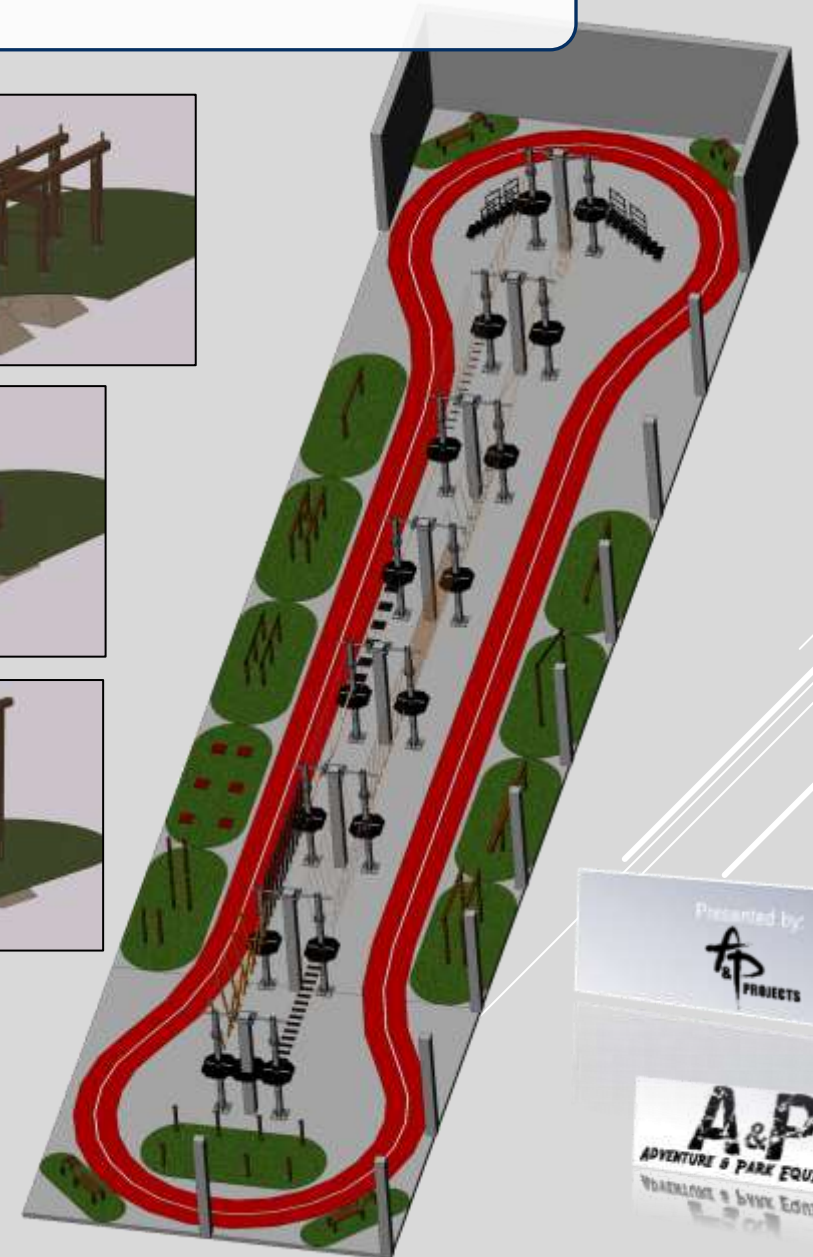
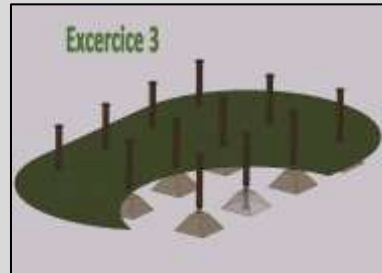
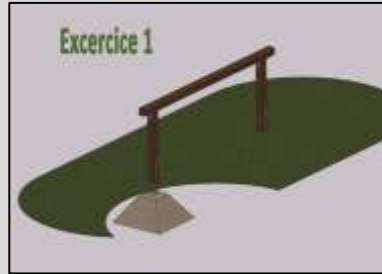
Presented by:



A&P
ADVENTURE & PARK EQUIPMENT
WOODWORK & BUNKER EQUIPMENT

Inspiration

- **Sports & Fitness courts through the park or indoor, for the fitness addicts**



Inspiration

- **Artificial caving**



Fixed or mobile add-on modules, equipped with evacuation hatches.
The entire structure can be covered by a canopy.



- **Netpark with High Ropes no safety line**



Double layer of netting, under tension, for fall arrest.

This structure requires a lot of maintenance. It is necessary to tighten the nets regularly. The lifespan of the nets is limited. Nets are often used for playing in despite the fact that it is a high rope course.



To have an attraction which is sustainable, the high rope track and the nets, has to be built between artificial steel poles.

Presented by:



A&P
ADVENTURE & PARK EQUIPMENT
WORLDWIDE & BUILT EQUIPMENT

Inspiration

- **Jump and fun net park with playelements**



Triple layer of nets, under tension, for jumping and playing.
Accessible for multiple persons.
This activity has a high fun level
The disadvantage of this activity is the high cost of maintenance, as the nets have to be stretched regularly. The lifespan of the nets is limited.



Inspiration

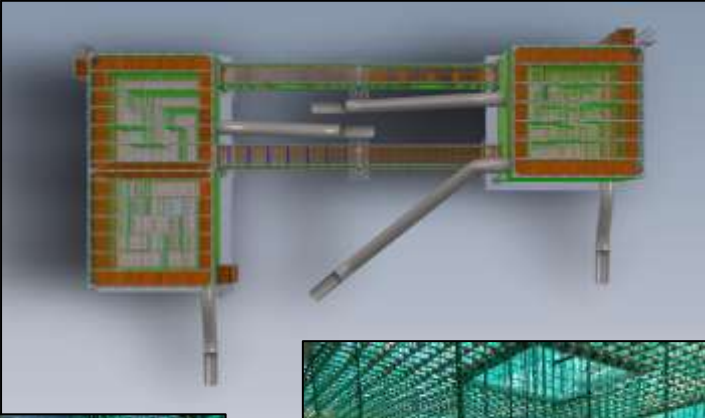
- **3D Labyrinth / 3D Maze with exits to find, to experience several attractions**



An amazing 3D-Maze, up to 12 metres high, with 5 floors full of adventure.

Lost For Hours

to find the exit,
to find the entrance of several tube slide,
to find connections between parts,
going up - going down - to find a death end - to return to where you started - hoping to find the right track



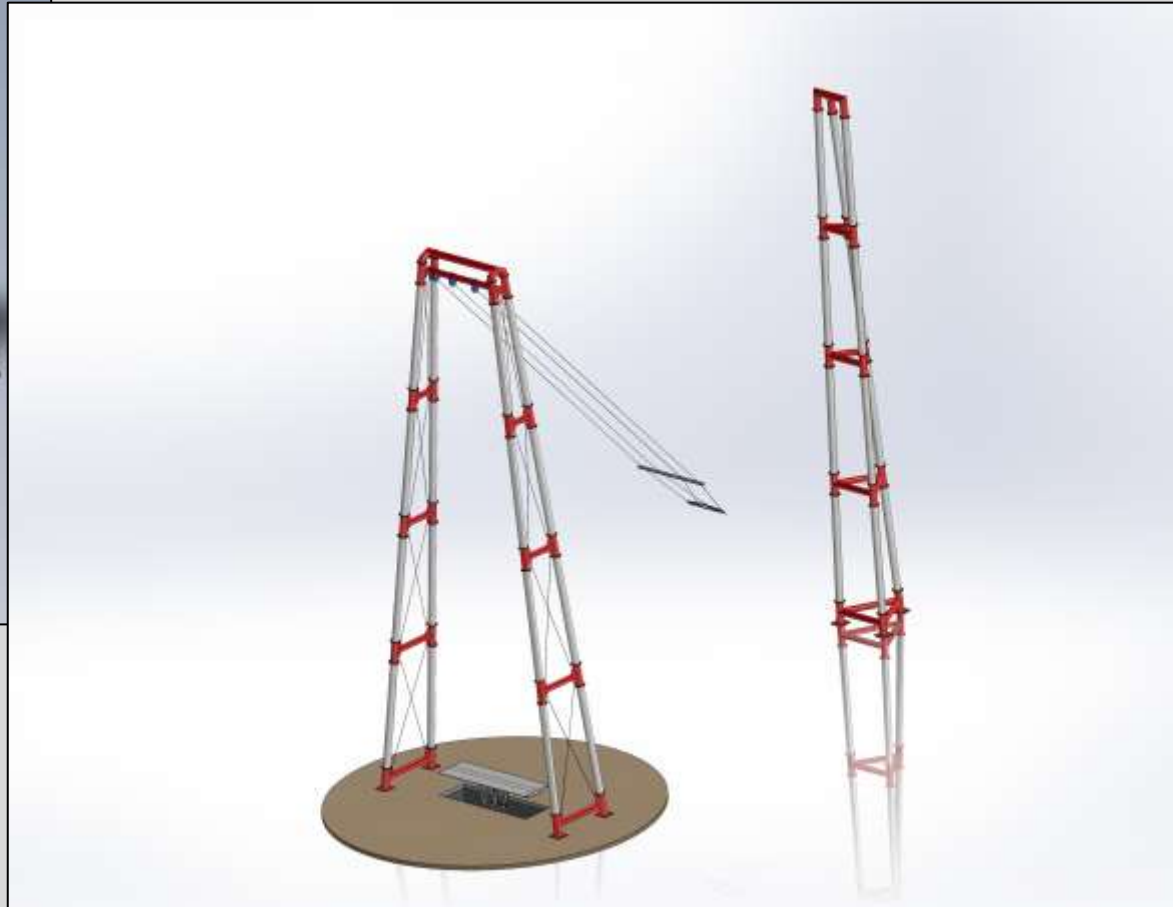
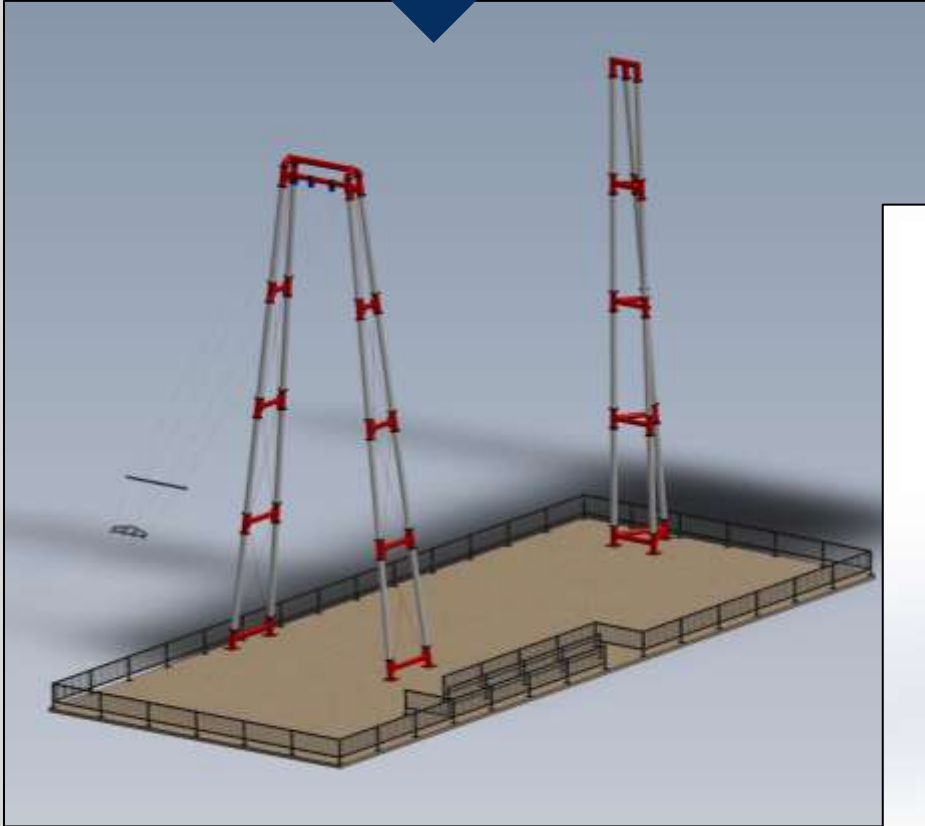
Inspiration

- **Quick Jump & Free flight**



Inspiration

- **Giant Swing**



Inspiration

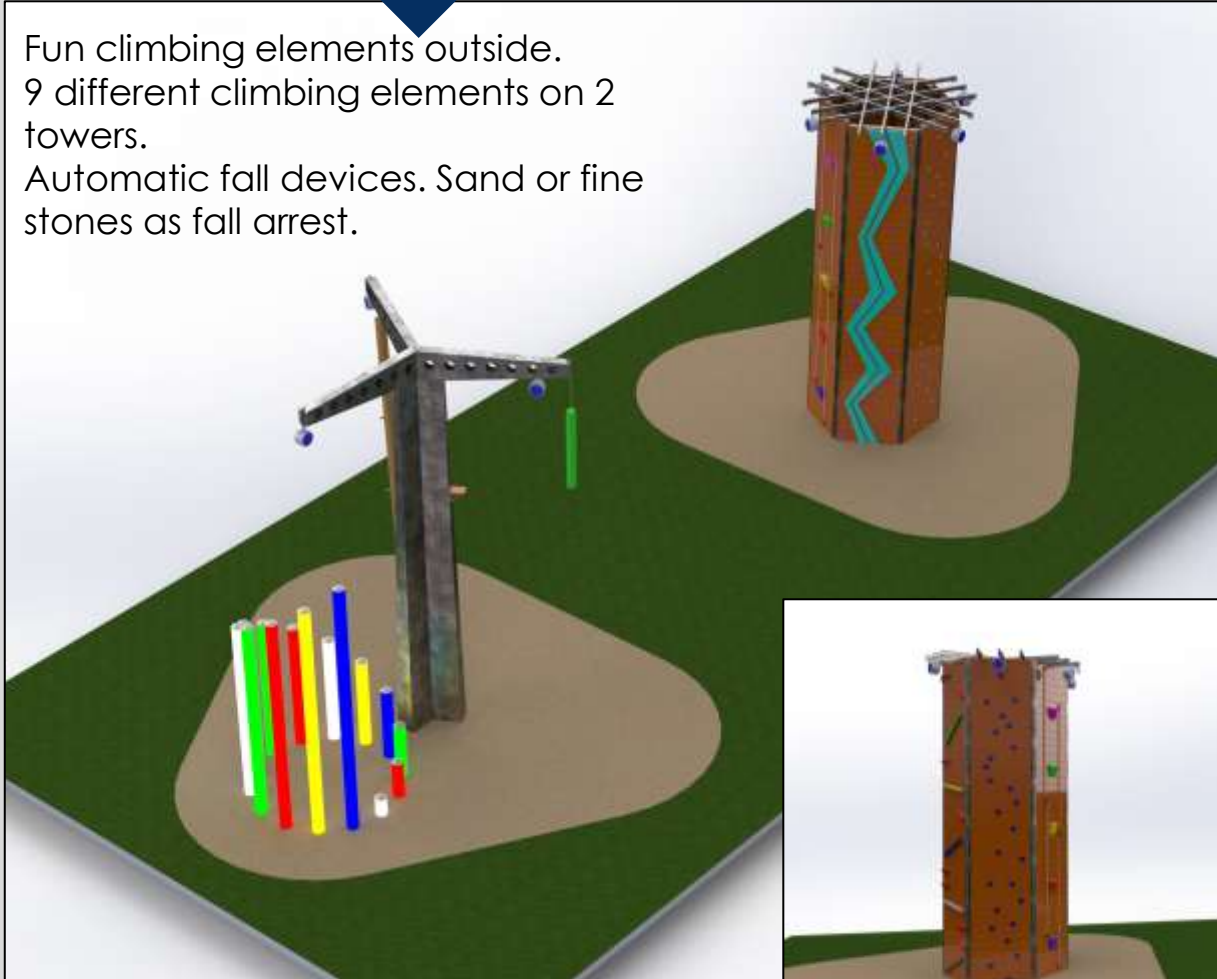
- **Wall climbing several tracks on adventure tower / on scaffolding / on a climbing wall structure**



Inspiration

- **Fun-Climbing**

Fun climbing elements outside.
9 different climbing elements on 2
towers.
Automatic fall devices. Sand or fine
stones as fall arrest.



- **Bouldering 3 m high, Sand or Fine gravel as fall arrest**



Artificial Rocks, in concrete with climbing holds.
Fall arresting is sea sand.
Can be used for bouldering or as a play element



- **Via ferrata on bouldering rocks**



- Artificial rocks, in concrete with additional climbing grips and stainless steel supports.
- Sea sand or very fine gravel serves as fall arrest.
- A via ferrata is built on the rocks and on any neighbouring buildings or structures.
- A cable is used as a lifeline, like in the mountains



Inspiration

- **Obstacle climbing**



Climbing on Ladders, nets, criss-cross beams, hand holds, etc.. Protected by an automatic climb belay system

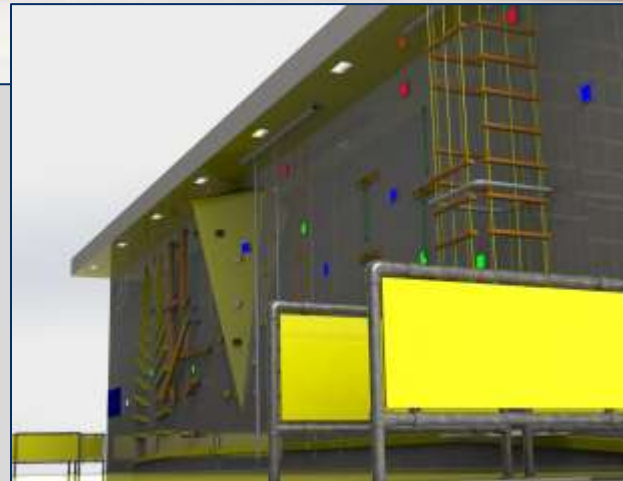


Inspiration

- **Fun Bouldering**

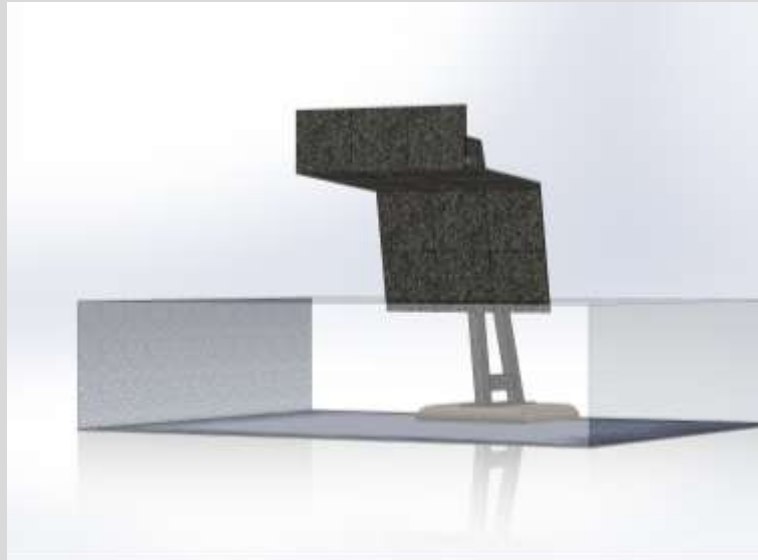


Climbing on Ladders, netunnels, criss-cross beams, hand holds, climbing panels, etc.. Trying to touch a tag pad to create a highest score. Protected by a foam pit or fall cushions.



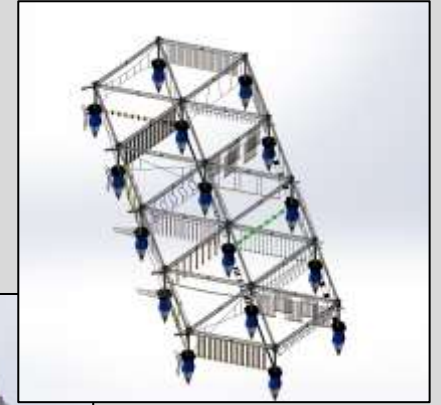
Inspiration

- **Waterclimb**



Inspiration

• Floating High Rope Park



The structure is built to be used without a safety line in Spring, Summer and Fall. Only lifejacket, helmet and wetsuit for water below 18°C.

The structure is also built to be used with a safety line Double function on the same construction.
When winter kills your fingers and it's not pleasant to fall into the water, the continuous belay system keeps you safe and secure when falling.



Inspiration

- **High Ropes above a swimming pool without a life line**



An extra attraction for indoor and outdoor swimming paradises. A Rope Park suspending on the roof or on an extra structure above the water. Height of falling down 1 - 2 m.

There is an hoisting system in the poles to lift the totality, when not used.



Inspiration

- **Bike Park with sustainable obstacles spread over the park.**



Inspiration

- **Suspending bridges**



All kind of suspending bridges for the big crowd.

Walking surfaces of the bridges are adventure elements

Sustainable structures and bridges



Inspiration

- **Suspending High Ropes In Nettunnels**

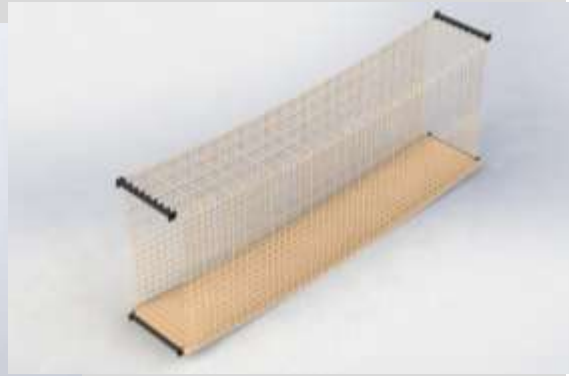
High Rope activities without a belaysystem, in suspending nettunnels

Sustainable nettunnel constructions.



Inspiration

- **Interactive structure full of aventure for the big crowd**



Includes a **tag system** for timekeeping to beat the best score of the day.



Inspiration

- **Adventure trails / Suspending Vertigo tracks**



Fear courses, adventure activities in suspended fine nets attached to rocks.

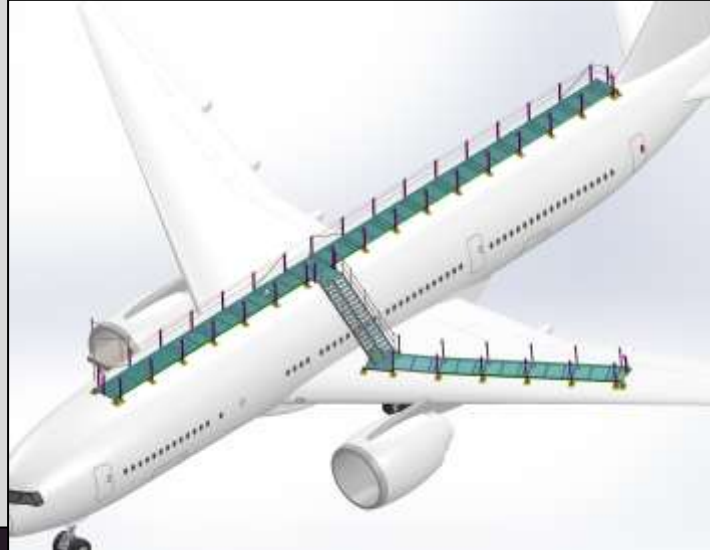
When vertigo plays with your spirit, you doubt that what you are doing is ok!

Fine steel nets protect you if you slip and fall down



Inspiration

- **Themed adventure trails / secured walkways**



Inspiration

- Towers as observation tower, look out tower, sportsactivity,,,



Inspiration

- Slides



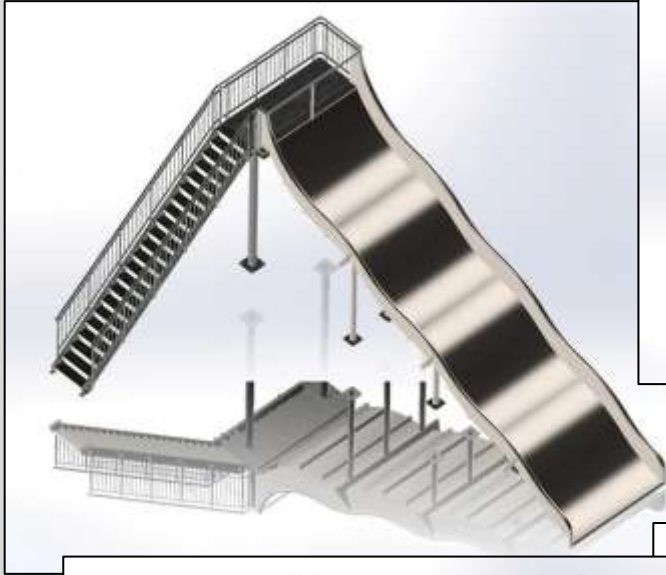
Inspiration

- Slide into big air bag / foam pit



Inspiration

- **Water slides**

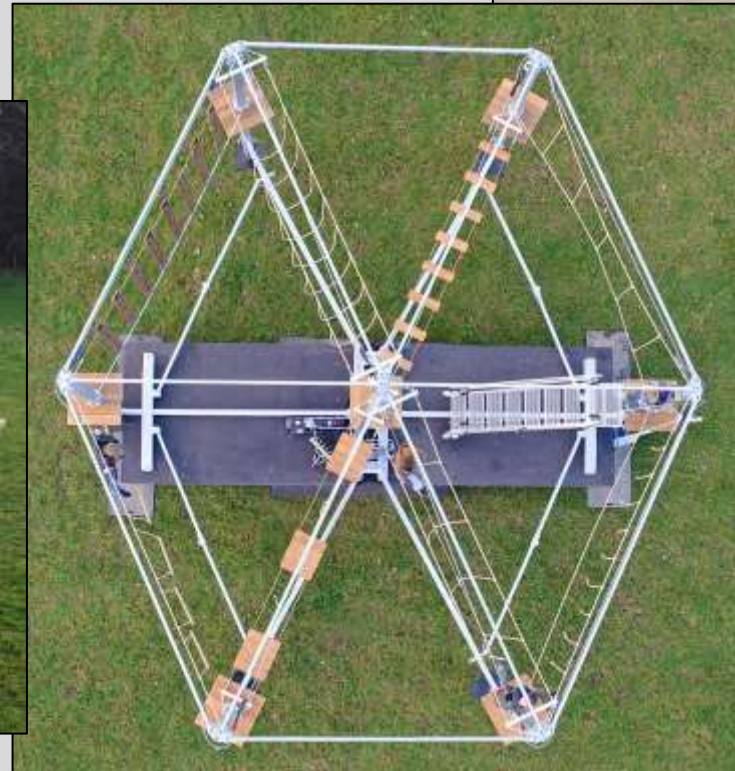


Inspiration

• Rope Park Trailer light pulled version

A mobile Rope park on a trailer, for kids, youngsters and adults.

- Light version 3500 kg
- Car pulled trailer
- 8 obstacles, platform height 3m
- Fully hydraulically adjustable
- Capacity 16 pers.

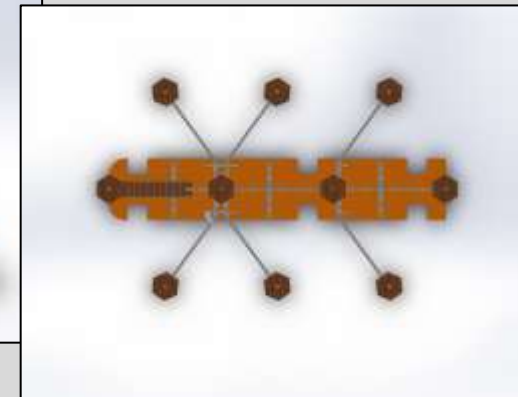
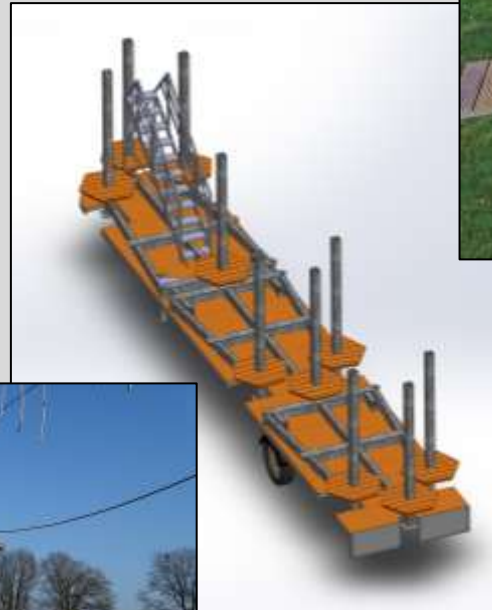
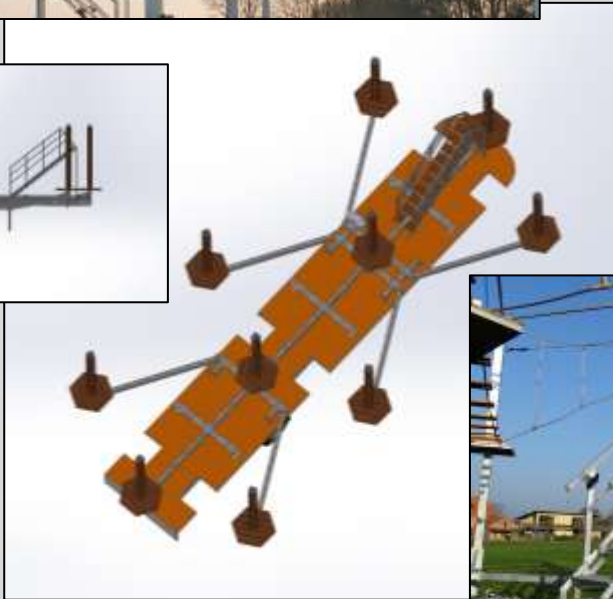
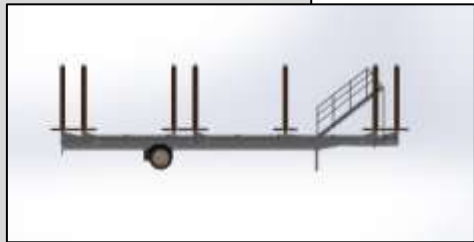


Inspiration

• Rope Park Trailer semi-trailer version

A mobile Rope park on a semi trailer, for youngsters and adults.

- Semi version 7000 kg
- Semi light truck pulled semi trailer
- 12 obstacles, platform height 3m
- Fully hydraulically adjustable
- Capacity 24 pers.

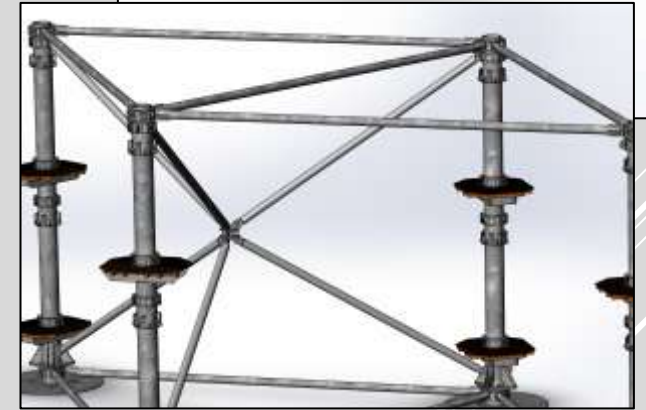
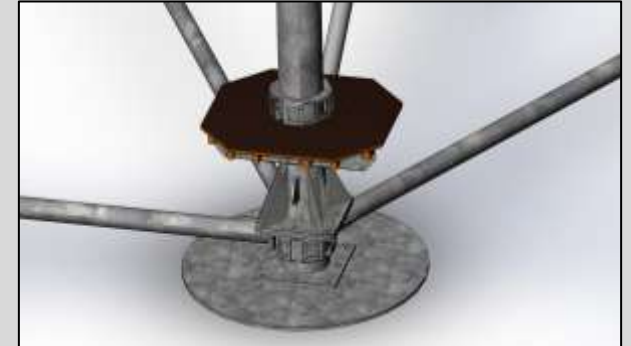
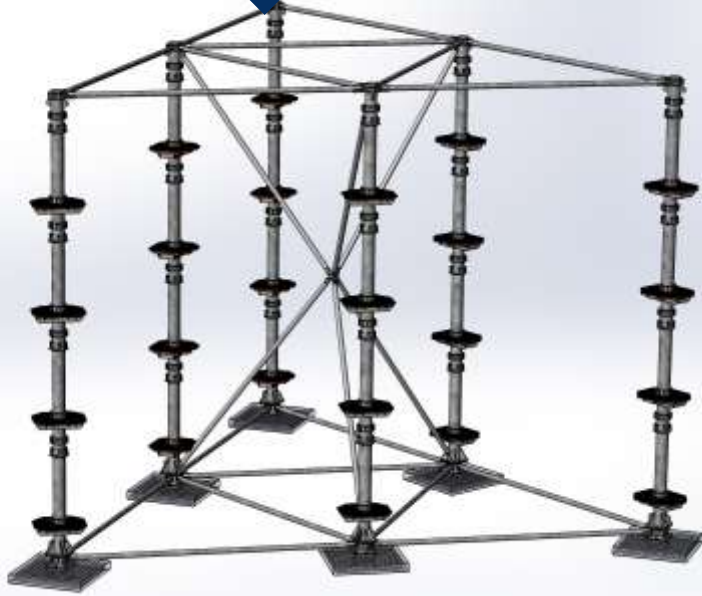


Inspiration

• Pop-Up self-standing Super-High Ropes

A Pop up modular High Rope Park.
Available for all ages.

- standard heights 1, 2,3 or 4 levels
- standard lengths obstacle 8 m
- Expandable to the future
- Continuous belay system on structure
- Selfstanding structure



Presented by:



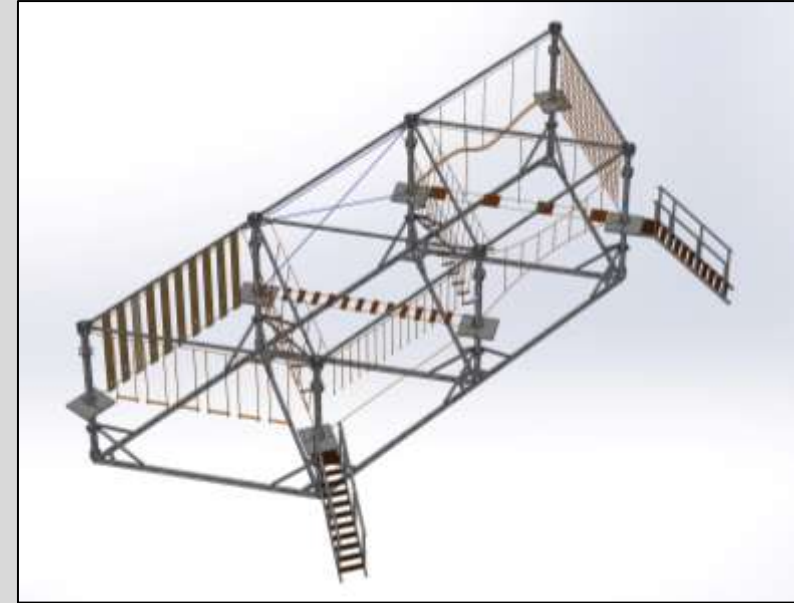
A&P
ADVENTURE & PARK EQUIPMENT
WHEELCHAIR & BIKING EQUIPMENT

Inspiration

• Pop-Up self-standing semi-High Ropes

A Pop up modular Rope park.
Available for kids, youngsters and adults.

- 3 standard heights 1 or 2 levels
- 3 standard lengths 4,5 m, 5 m or 6 m
- Expandable to the future
- Continuous belay system on structure
- Selfstanding structure



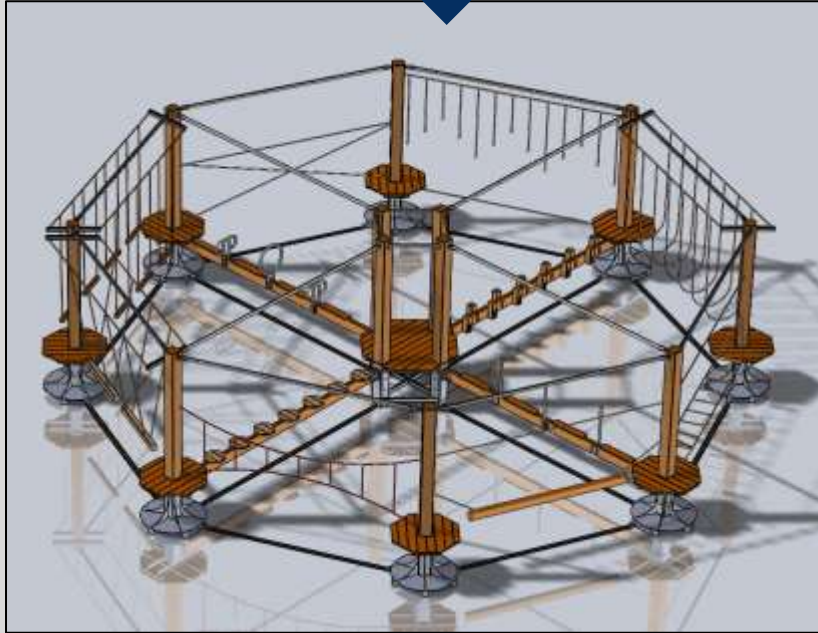
Presented by:



A&P
ADVENTURE & PARK EQUIPMENT
WAPLETON & BURNING EQUIPMENT

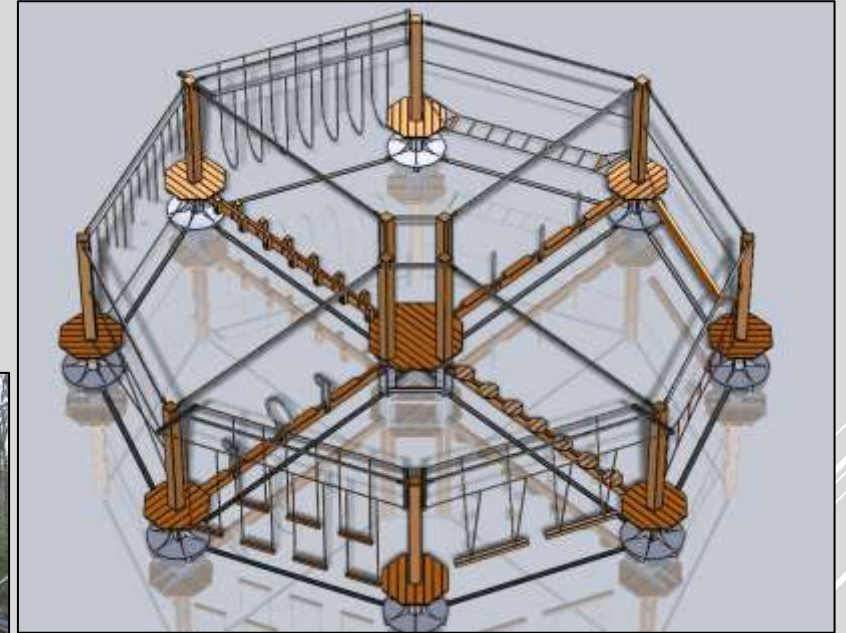
Inspiration

• Pop Up – low - kids adventure ropes



A Pop up kids adventure structure
Octagonal structure

- 1 standard height
- 1 standard length 4,5 m
- No belay system on structure
- Just fall absorption
- Selfstanding structure
- Transportable structure

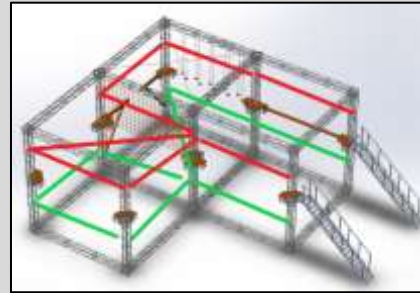


Inspiration

- **Pop-Up Truss –high or low ropes**

A Pop up high rope park in a truss structure

- Adjustable height
- Adjustable obstacle lengths
- Belay system on structure
- Selfstanding structure
- Transportable structure



Inspiration

• Pop-Up Truss – low ropes

A Pop-up low rope park in a truss structure

- No safety line
- Just fall absorption
- Transportable structure
- A pop-up concept



Inspiration

- **Themed playing and experiencing in city parks**



Inspiration

• Themed playing and experiencing in attraction parks

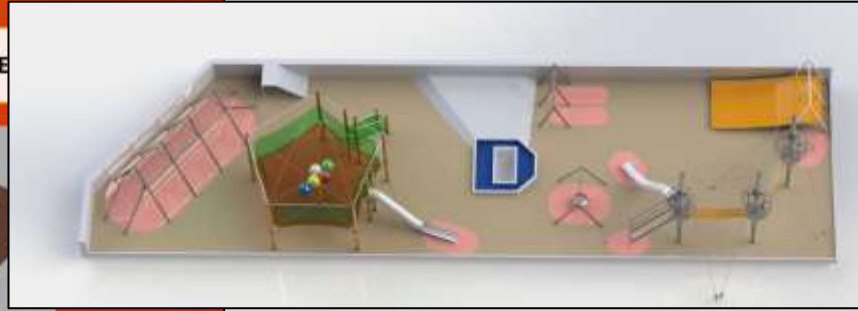
Introduction view

• Project **WALIBI** PARCOURS AVENTURE



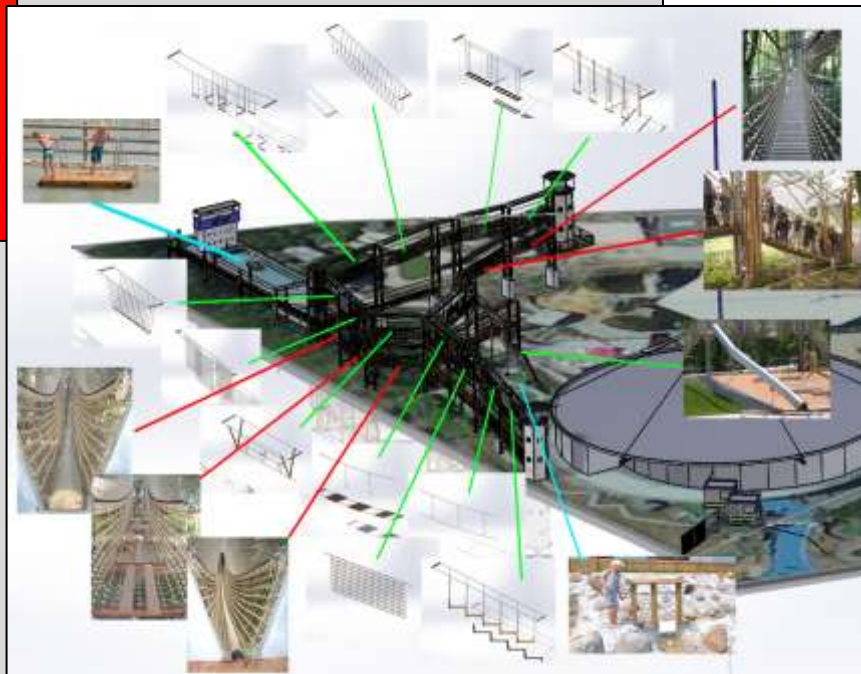
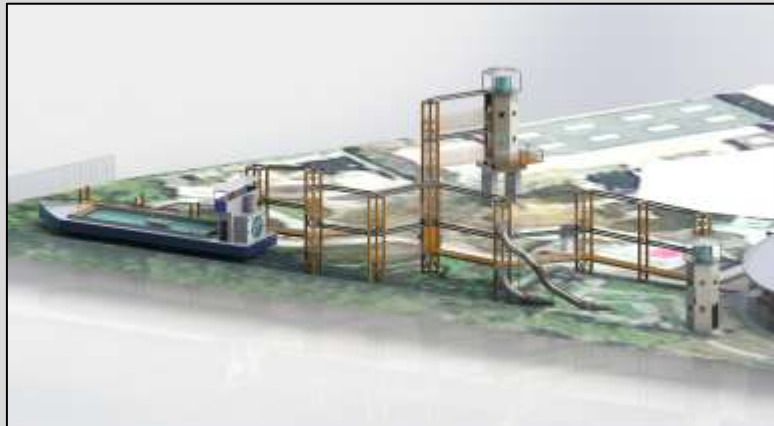
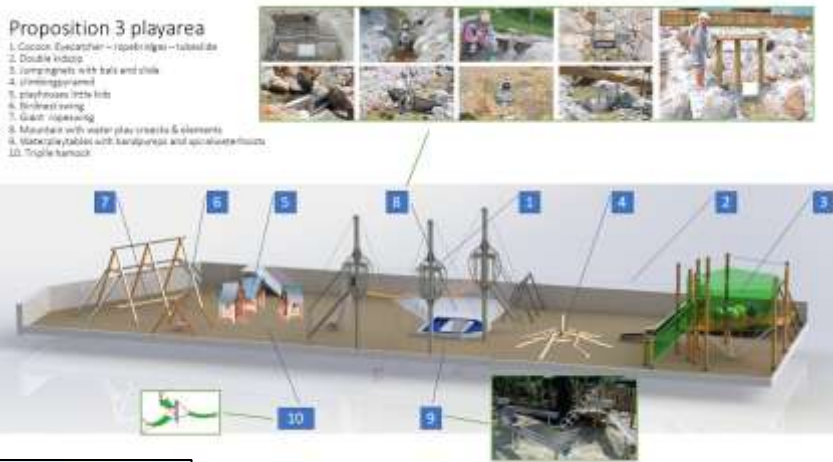
Parcours ouvert à double sens

Walibi Wavre Belgium
Draft Theme Booklet, Juin 2017
Walibi Adventure Track



Proposition 3 playarea

1. Cocoon: Eucalyptus - rope bridges - tunnel de
2. Double bridge
3. Jumpsuits with balls and chis
4. Jumpsuits
5. playhouses little huts
6. Rock wall swing
7. Giant rope swing
8. Mountain with water play creeks & elements
9. Waterplay tables with handpumps and sprayers/fountains
10. Triple hammock



Presented by:



A&P
ADVENTURE & PARK EQUIPMENT
WOODLAND & BUNKER EQUIPMENT

Contact

- **Who to call for more inspiration**

Contact:

A&P Projects BV
Hertstraat 42 B
2590 Belaar
Belgium
sales@ap-projects.be

Filip Meeuws (sales)
filip@ap-projects.be
+32 472 753 656

Paul Huybrechts
+32 475 761 561
design@ap-projects.be

